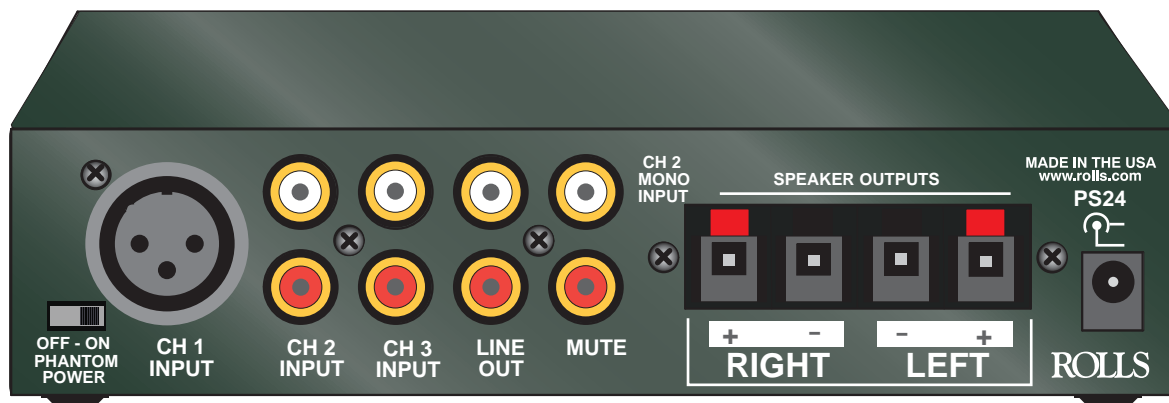
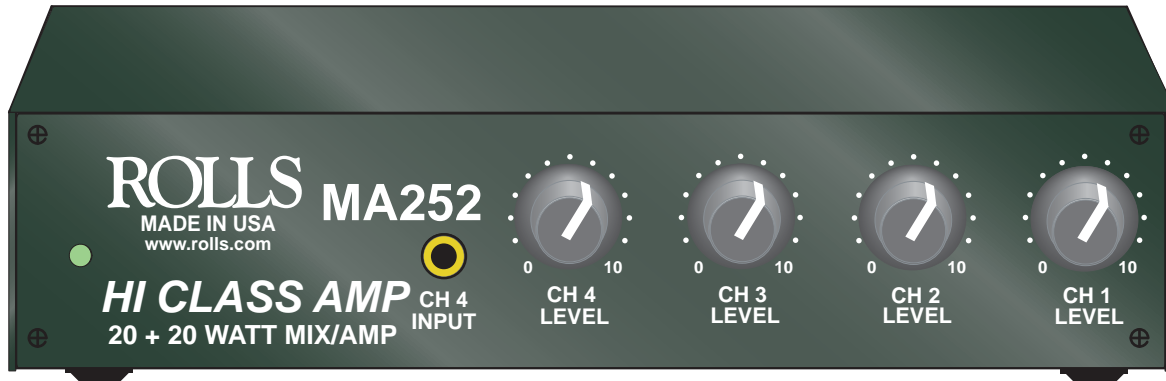


20 + 20 WATT MIXER - AMPLIFIER

MA252

ROLLS



The new MA252 is a compact class D stereo amplifier with a 4 CH. stereo mixer built in. It has 20 watts per channel @ 4 Ohms. The class D low heat design gives the MA252 the ability to be mounted in very tight applications. It will work great in ceilings by projectors, or anywhere small and heat free amplification is required. The MA252 is in an all metal chassis and weighs 1 pound. Overall dimension are 6.75" X 3.5" X 1.5". Bottom mounts are provided for permanent installations. The MA252 has an included 24 VDC external power supply. The 4 channel mixer section consists of 2 separate RCA stereo inputs, along with an XLR mic input and a 3.5mm (1/8") stereo input perfect for an ipod or laptop computer type input. Phantom power is supplied to the XLR input by a switch on the back of the MA252.

ROLLS MIXER - AMP 20 + 20 Watts

INSTALLATION MIX - AMPLIFIER

STEREO INPUTS AND OUTPUTS

ROLLS

5968 SOUTH 350 WEST S.L.C., UT 84107

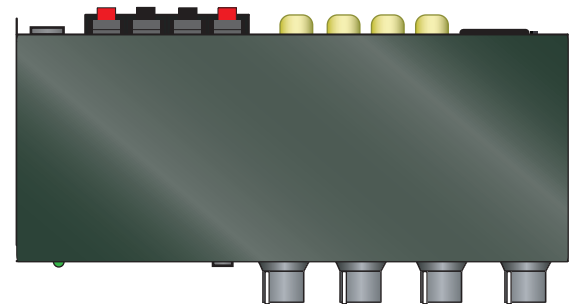
PHONE: 801-263-9053

FAX: 801-236-9068

DATA SHEET FOR MA252

www.rolls.com

Size: 6.75" X 3.5" X 1.5"



Included - 24
VDC ROLLS
PS24 external
power supply

SPECIFICATIONS

Line Input Impedance:	10K Ohms line 600 Ohms mic
Power Output:	20 watts X 2 @ 4 Ohms.
Voltage Gain:	55 dB mic 30 dB line
Maximum Supply Voltage:	24 VDC
THD:	.05% typical
Efficiency:	85%
Bandwidth:	20Hz - 25 kHz
Size:	6.75" x 3.5" x 1.5"
Weight:	1 lb.



MADE IN USA